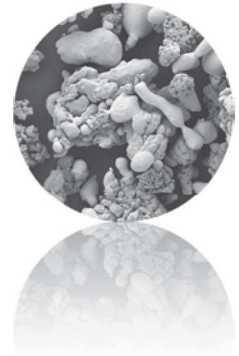




MAKIN METAL POWDERS

(UK) LIMITED



IRREGULAR COPPER POWDERS

These products display low to medium Apparent Density and facilitate good green strength. Various grades are available to meet specific requirements. Used in dynamo, electric motor and alternator brushes, as a catalyst and in iron powders as an additive. Widely used in sintered parts formulations.

IRREGULAR COPPER POWDERS

PRODUCT GROUP	CHEMICAL COMPOSITION %	APPARENT DENSITY g/cc	PARTICLE SIZE μm
Irregular Copper Powder	CU>99.0	3.0 +/- 0.5	<150
Irregular Copper Powder	CU>99.0	2.8 +/- 0.3	<63
Irregular Copper Powder	CU>99.0	2.8 +/- 0.3	<45

IRREGULAR BRONZE POWDERS

Water atomised in various alloy compositions and grades for use in high density powder metallurgy parts, brake linings, porous bearings and diamond tool matrices. Also used in bronze press-ready premix formulations. Widely used in PTFE bearing compounds.

IRREGULAR BRONZE POWDERS

PRODUCT GROUP	CHEMICAL COMPOSITION %	APPARENT DENSITY g/cc	PARTICLE SIZE μm
Irregular Bronze Powder	Sn10 -20	2.6 to 3.6	<150 <63 <45

SPHERICAL COPPER POWDERS

For use in the manufacture of diamond tools and composite discs, cold casting decorative work, metal spraying and anti-fouling paint formulations.

SPHERICAL COPPER POWDERS

PRODUCT GROUP	CHEMICAL COMPOSITION %	APPARENT DENSITY g/cc	PARTICLE SIZE μm
Spherical Copper Powder	CU>99.3	5.0 +/- 0.2	<150
Spherical Copper Powder	CU>99.3	5.0 +/- 0.3	<63
Spherical Copper Powder	CU>99.3	5.0 +/- 0.5	<45

SPHERICAL BRONZE POWDERS

A variety of alloy compositions including 89/11 Cu/Sn air atomised spherical powders with narrow particle size distribution for use in manufacture of filters. Also used in the diamond tool industry, PTFE bearing compounds and artistic cold cast figures.

SPHERICAL BRONZE POWDERS

PRODUCT GROUP	CHEMICAL COMPOSITION %	APPARENT DENSITY g/cc	PARTICLE SIZE μm
Spherical Bronze Powder	Sn11 -20	5.0 +/- 0.5	<75 <45

DENDRITIC COPPER POWDERS

FINE GRADES (0-53 micron)

These powders have applications in sintered friction materials, metal carbon brushes, diamond tool setting, anti-fouling paint formulations and cold cast resins.

DENDRITIC COPPER POWDERS

PRODUCT GROUP	CHEMICAL COMPOSITION %	APPARENT DENSITY g/cc	PARTICLE SIZE μm
Dendritic Copper (Heavy)	CU>99.7	> 0.2	<150
Dendritic Copper (Medium)	CU>99.5	1.5 +/- 0.5	<150
Dendritic Copper (Light)	CU>99.4	<1.0	<63
Dendritic Copper (Medium)	CU>99.5	1.7 +/- 0.5	<45

STANDARD GRADES (0-150 micron)

Powder metallurgy applications e.g. used with tin powder for production of bronze bearings.

We also offer a range of other speciality materials such as Sn/Al, copper and bronze